



Trio® Inclined Screen, TIO6163

Our Trio® inclined screens are designed for continuous operation in the most demanding wet and dry, static or mobile, continuous duty operating environments.

The hot rolled steel side plates are reinforced around the vibrating mechanism. The forged steel eccentric shaft is precision machined and features spherical, self aligning, roller bearings. The stroke or amplitude is simple to adjust with counterweights that are bolted to the flywheels and the pulleys. The side tensioned clamp rails are huck bolted to the frame and the decks are robotically welded to provide superior mechanical integrity.

Our Trio® screen range is designed for versatile screening and reliable gradation in a broad range of multi-product, secondary and final sizing applications. The machine can be integrated within aggregate processing, hard rock mining, minerals screening, environmental mitigation, and recycling separation processes.



Trio® inclined wet screen operating at a plant in Central America

Applications

- Used for general product sizing and final product sizing
- Heavy duty TIOSP inclined scalping screens are available for primary screening applications
- Screens can be supplied with camber/crowned or flat decks and accept a broad range of screen media types
- For wet applications, screens can be supplied with dynamic or static wash kits

Features

- Screen body as standard: Huck bolt construction for structural integrity; Side tensioned clamp rails; Marsh Mellow* springs; Rubber side snubber to prevent surge motion; Abrasion Resistant (AR) steel wear parts lining the feed box and discharge lips; Flywheel safety guard
- Side plates: 10 mm (3/8") hot rolled steel side plates with 10 mm (3/8") reinforcement plates added around the vibrating mechanism
- Camber/crowned decks or flat deck arrangements accept most screen media types including woven wire mesh, self cleaning mesh, urethane rubber mats and punch plate
- Stroke: Amplitude is variable from 6 mm to 12 mm (1/4" to 1/2"). Adjustable by addition or removal of plugs supplied with the machine
- Lubrication: Oil lubricated with an outer grease seal to protect the bearings from dust or contamination
- Shaft: Ground forged steel eccentric shaft with precision machining
- Build options: Fixed speed drive system with a Totally Enclosed Fan Cooled (TEFC) motor on pivoting Rosta* mount; V-belt drive; Broad range of screen media; Optional wash kit includes a manifold with shut-off valves, flexible hoses, spray bars and spray nozzles

Trio® Inclined Screen, TIO6203

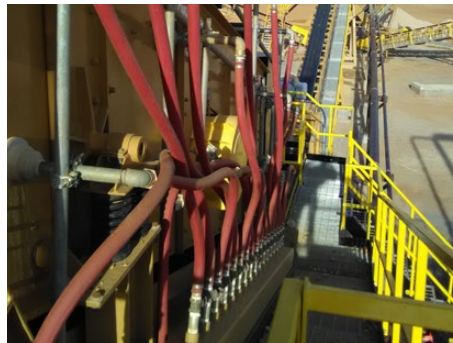
Trio® Inclined Screen, TIO6203 Specifications



| | |
|----------------------------|----------------------------------|
| Machine size: | 1,830 x 6,096 mm (6' x 20') |
| Machine weight: | 7,299 kg (16,092 lbs) |
| Bearing bore: | 140 mm spherical roller bearings |
| Max feed size: | 200 mm (8") |
| Operating angle: | 15 - 20 degrees inclined |
| Max required power: | 18.5 kW (25 HP) electric motor |
| Eccentric operating speed: | 800 - 860 RPM |



Abrasion Resistant (AR) steel wear parts lining the feed box and discharge lips

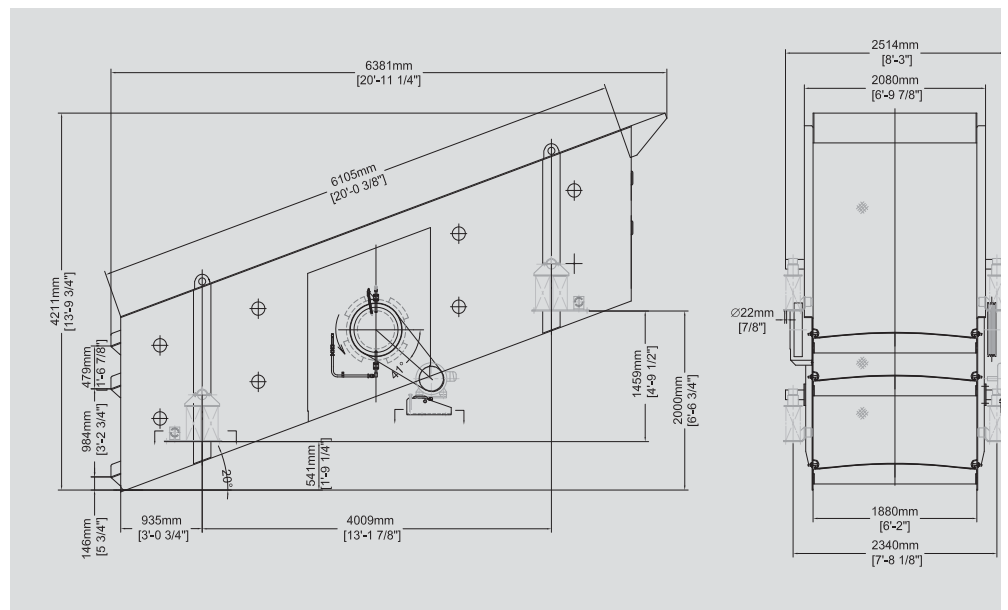


Wash kits available with manifold, shutoff valves, flexible hoses, spray bars and nozzles



Screen deck frames can be lined with Linatex® premium rubber products as an additional option

Trio® Inclined Screen, TIO6203 General Arrangement Drawing



Note: Drawings not to scale.
Specifications may not be representative of most recent upgrades and changes.

Weir Minerals

trio@mail.weir
www.minerals.weir

Copyright © 2017, Weir Minerals Australia Ltd. All rights reserved. TRIO is a trademark and/or registered trademark of Trio Engineered Products, Inc.; LINATEX and the Linatex red colour are trademarks and/or registered trademarks of Linatex Ltd; WEIR and the WEIR logo are trademarks and/or registered trademarks of Weir Engineering Services Ltd. Certain features of the technology featured in this publication may be protected by pending and granted patents in the name of The Weir Group PLC and/or one of its subsidiaries. MARSH MELLOW and ROSTA are not trademarks of any company forming part of The Weir Group PLC. WMD0197 2017/04